



**You're invited to a drop-in session at**  
*The Manor Hotel, West Bexington*

**Thursday 2 November 6-8pm**  
or  
**Friday 3 November 10-12am**

**This is a chance for all of us to  
steer the future of our lovely  
village and the surrounding  
landscape in times of change.**

**Let the community speak!**

# ***3 Villages***

*Your Vision, Our Future*



**Starting the project...**

**Who's involved...**

**What's happened so far...**

**Next steps...**

## How should our villages develop over the next 20 years?

This community project needs your thoughts and ideas. It will build on the Vital Villages report some residents may recall.

Find out how things are progressing by checking the website <https://puncknowle.net> ; the BVN or Puncknowle Post Facebook Page; by coming to any of the Steering Group meetings which are open to everyone; or by signing up to receive regular email updates.

Here's the Steering Group with residents from our 3 villages - maybe you recognise them?

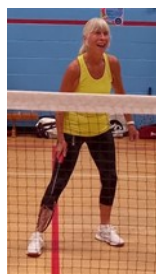


Brian Bowsher

Sally Bowsher

Paul Bullen

Claire Hart



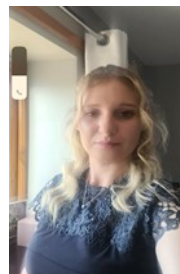
Fran Marsh



Jackie Hunt



Ellen Simon



Kate Strawbridge



Michele Vassar



Dave Swan



This could be You!



And You!

## What's happened so far?

Comments from last community 'drop-in' session 13th May 2023 showed public concerns re: housing, heritage, environment, transport and energy supply - *see our last newsletter and website.*

**Now: there's a Project Plan and Timeline;**  
**We've looked at how other local villages have made a Neighbourhood Plan;**  
**We're sorting out the funds needed and have had meetings with some of the village groups.**

## We need

**Your views and ideas - this is most important**

**People with skills** - in planning, graphics, community engagement, IT, journalism, mapping or surveys and questionnaires ... *we'd love to hear from you. Any time that you could spare would be of use.*

**Anyone who'd like to join the Steering Group**

**For details and contact please see**  
**<https://puncknowle.net> Neighbourhood Plan**